



CERTIFIED



CERTIFIED

COOLING
CAPACITYPROTECTION
GRADERAL 9005
RAL 7035
COLOR
OPTIONS

MICRO DATA CENTER SOLUTIONS

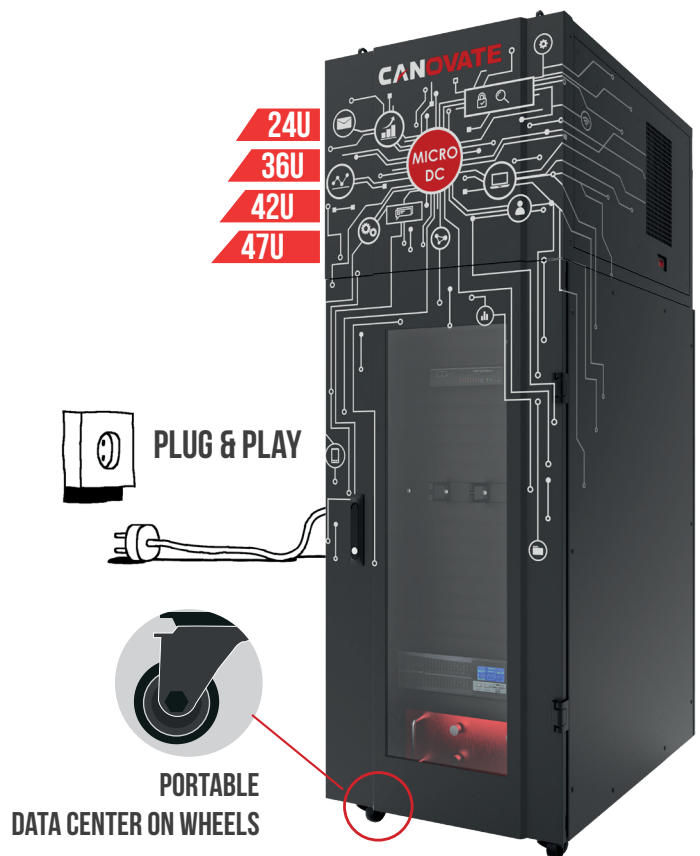
An emerging trend in data center market is Micro DC, which provide cost-effective, energy-efficient data center services with a rapid deployment time frame. Canovate Micro DC solution is an industry leader for efficiency and cost effectiveness. Canovate Micro DC solutions are an integrated solution that incorporates Racks, UPS, Cooling, Fire Suppression, PDU and EMS in a single, compact platform.

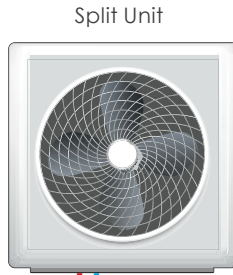
Remote monitoring features allow the group headquarters to perform unified management. The Micro DC concept also reduces Cap-Ex dramatically in comparison with traditional brick and mortar DC constructions, and it will enable your current and future customers to access the cloud easily and benefit from a resilient and fully supported infrastructure.



Highlights

- Micro Plug & Play Data Center including cooling, fire suppression, monitoring, power management and protection
- Stand-alone Data Center
- Eliminates raised floor and external cooling equipment requirements
- Individual rack cooling with from 2 kW up to 4 kW
- High level security with in rack fire protection and monitoring systems
- Advanced power management enabled by IP PDU and UPS systems
- Install Data Center where you want and need it
- Rapid deployment in 4-6 weeks from plan to start-up
- Low total cost of ownership
- Up to 50% space savings
- EMS (Environmental Monitoring System)
- DCIM option
- IP PDU
- UPS
- Fire Detection/Extinguisher System (3U)
- Protection Grade: IP54



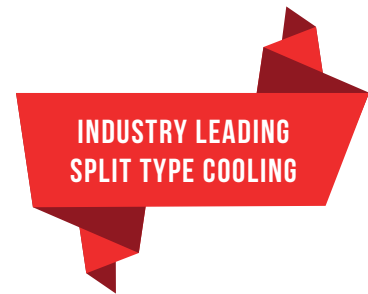


SPLIT TYPE MICRO DC SOLUTIONS



Canovate Micro DC family makes available "Split Type Micro DC" because of the latest need in the market. Split Micro DC can be located in any room which doesn't have traditional ventilation system.

Consequently, Split Micro DC will not dissipate any heat from condenser by comparing standard Micro DC as Split Type has external outdoor unit of the top cooling system.



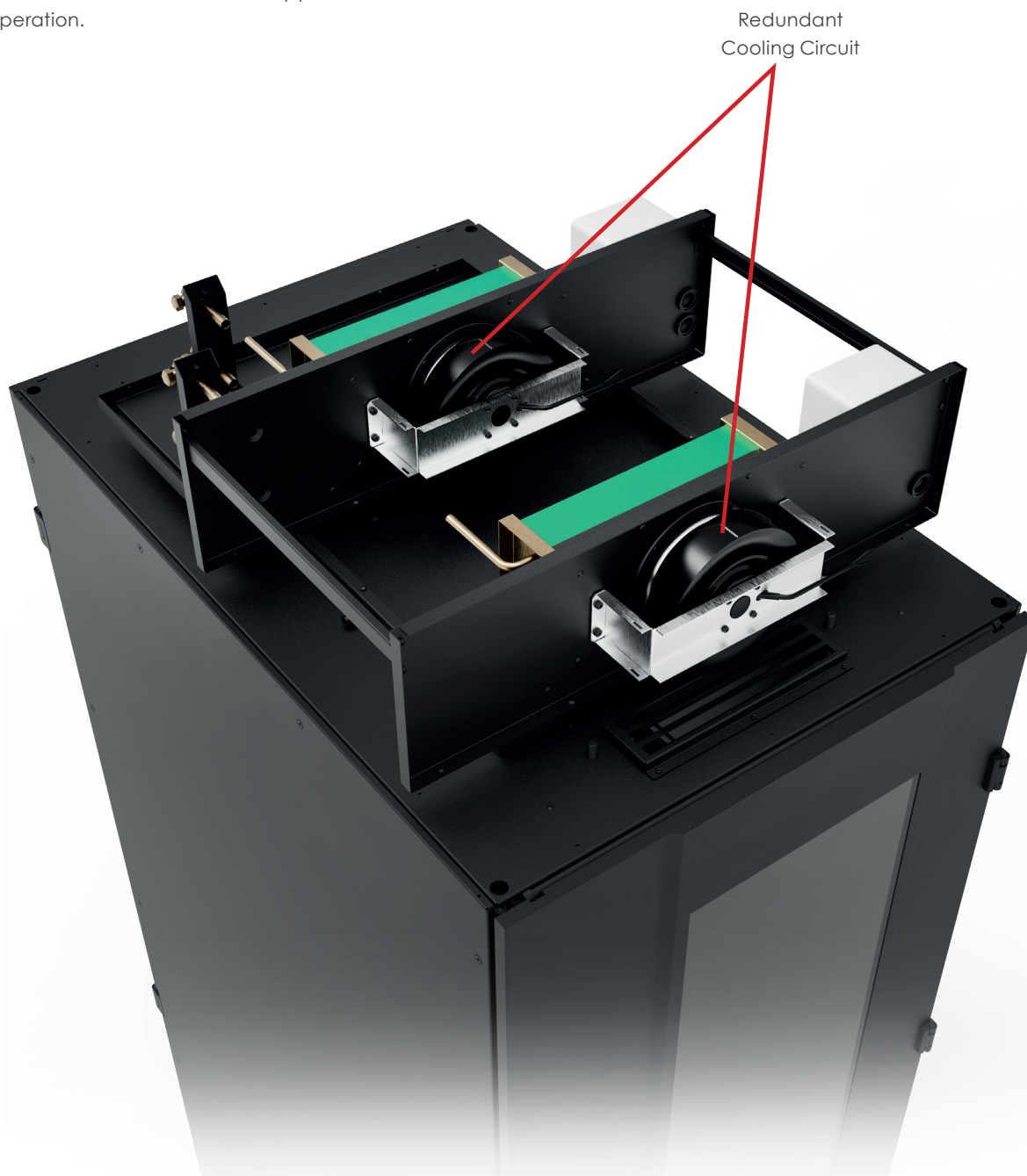
Fan		2 kW	4 kW
Fan Type		Axial	
Fan total air flowrate	m³/h	800	1600
Total power consumption	kW	0,12	0,15
Fans quantity		1	
Connections			
Refrigerant connections	Outlet line (ODS Ø)mm	8	10
	Inlet line (ODS Ø)mm	8	10
Electrical Data			
Power supply	V-Ph~Hz	230/1/50-60	
Sound Data			
Sound Pressure	dB(A)	52	54
Dimensions and Weight			
Length	mm	638	
Depth	mm	453,8	
Height	mm	438,8	
Weight	kg	24	32

Operating Temperature Interval	-20°C +55 °C
--------------------------------	--------------



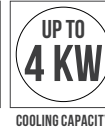
The use of a dual circuit outdoor unit kit by Canovate® for Micro DC solutions is particularly advantageous. This kit allows the data center to operate in extremely harsh conditions, enhancing its resilience and ability to withstand environmental challenges. Harsh conditions can include extreme temperatures, humidity, dust, and other external factors that may pose a risk to the data center's operation.

Overall, Canovate®'s approach to offering redundancy and compact design in their Micro DC solutions aligns with the industry's demand for high availability, reliability, and efficient space utilization in data center operations



By providing a dual circuit outdoor unit kit, Canovate® provides redundancy at the cooling system level. If one circuit or unit fails or requires maintenance, the other circuit can continue to operate, ensuring continuous cooling and preventing overheating of critical equipment. This redundancy feature contributes to the overall uptime and reliability of the data center.

NEW!



REDUNDANT TYPE MICRO DC SOLUTIONS



Redundancy is highly needed even for small scale of data center types anymore so that annual downtime can be minimized. In this regard, Canovate® offers an overall compact design for redundancy, even in Micro DC solutions. Canovate® Micro DC can be supported by a dual circuit outdoor unit kit that can operate in extremely harsh conditions.

- 2+2 ve 4+4 kW N+N redundant cooling capacity options
- Redundant outdoor cooling Unit
- Large working interval (-20 °C +55 °C)

Total Capacity		2 kW	4 kW
Total capacity	kW	1,9	3,9
Sensible capacity	kW	1,9	3,9
SHR		1	1
Fan			
Fan type		Radial	
Fan total air flow rate	m³/h	800	1600
Total power consumption	Watt	130	280
Fans quantity	Pa	1	
External static pressure	Pa	20	
Sound Data			
Sound Pressure	dB(A)	55	
Air Filter			
Filter model		NA	
Electrical Data			
Power supply	V-Ph~Hz	230/1/50-60	
Refrigerant		R410A	
No. of circuits		1	
Connections			
Refrigerant connections	Outlet line (ODS Ø)mm	8	10
	Inlet line (ODS Ø)mm	8	10
Dimensions and Weight			
Width	mm	600/800	
Depth (24U/36U/42U)	mm	1000/1200	1000/1200
Height(42U/47U)	mm	2530/2790	
Weight 42U (1000/1200)	kg	135/145	150/160
Weight 42U (1000/1200)	kg	144/157	159/172

INDUSTRY LEADING REDUNDANT COOLING

Minimum Order Quantity: 15 Pcs.

COMPONENTS OF MICRO DATA CENTER



Camera



AC Unit
(Air Conditioning Unit)



Audible and
Visual Alarm



1U EMS
(Environmental
Monitoring System)

-  Air Flow Sensor
-  Humidity Sensor
-  Door Contact
-  Liquid Sensor
-  Smoke Sensor
-  Temperature

IP-PDU



3U Fire Extinguisher System
with FM200 or Novec 1230



Power Distribution
Module



Rack UPS
(Uninterruptible
Power Supply)

Canovate Standard Micro DC Configurations					
Cabinet System	Configurations	24U (1650mm)	36U (2260mm)	42U (2530mm)	47U (2790mm)
	Size Options	Width: 600-800mm, Depth: 1000-1200mm			
	IT Load Limit	2-4kVA			
	Environmental Protection	IP54 (dust protected, splashing liquid protection) as default			
	Material	Aluminum chassis, steel components			
	Certification	UL, CSA, RoHS, REACH, TSE			
Air Conditioning System	Cooling Type	DX based top cooling unit			
	Total Cooling Capacity	2-4kW			
	Sensible Cooling Capacity	1,9-3,9kW			
	Fan Airflow Rate	2kW: 800 m³/h, 4kW: 1600 m³/h			
	Refrigerant	R410A			
	Cooling Power Supply	230V/1Ph/50-60hz or 115V/1Ph/60hz			
	Sound Level	55dB(A) from 1 meter			
Power Supply System	Rack-mount UPS	3kVA or 6kVA			
	Backup Time (minutes)	Standard 5 mins (additional backup banks as optional)			
	Power Distribution Unit	Basic or IP PDU (20°C13+4°C19)			
	Rack-mount Electrical Panel	3U Power Distribution Panel as optional			
Monitoring System	Environmental Monitoring Device	1U Control Module with digital/analog sensor ports User friendly embedded interface for remote monitoring, dashboards, energy management, notification settings over email, SMS or phone call			
	Environmental Sensors	Temperature&Humidity, Smoke, Water, Door Contact as default			
	Access Control	Intelligent electronic lock with embedded card reader (Keypad or fingerprint options are available)			
	Video Surveillance	IP or Basic Cameras and NVR device as optional			
Fire Control System	Detection and Extinguishing	Completely auto-sense point-based extinguishing with the piping inside the rack			
	Gas Type	FM200 or NOVEC1230			



Cooling Capacity		2 kW	4 kW
Total capacity	kW	2	4
Sensible capacity	kW	1,9	3,9
SHR		1	1
Fan			
Fan type		Radial	
Fan total air flow rate	m³/h	800	1600
Total power consumption	Watt	130	280
Fans quantity		1	
External static pressure	Pa	20	
Sound Data			
Sound Pressure	dB(A)	55	
Air Filter			
Filter model		NA	
Electrical Data			
Power supply	V-Ph~Hz	230/1/50-60	
Refrigerant		R410A	
No. of circuits		1	
Dimensions and Weight			
Width	mm	600/800	
Depth	mm	1000/1200	
Height (42U/47U)	mm	2530/2790	
Weight 42U(1000/1200)	kg	135/145	150/160
Weight 47U(1000/1200)	kg	144/157	159/172

MICRO DC APPLICATION AREAS

